



- Unità di guida per cilindri ISO 6431 e microcilindri ISO 6432
Guiding units for cylinders ISO 6431 and minicylinders ISO 6432
- Versioni disponibili:
 - tipo "U" con bronzine (cod. **UB**...) - per cilindri da alesaggio 12 a 100
 - tipo "H" con bronzine (cod. **HB**...) - per cilindri da alesaggio 12 a 100
 - tipo "H" con cuscinetti a rotolamento (cod. **HS**...) - per cilindri da alesaggio 12 a 100

Available versions:

 - type "U" with sintered bronze rod guide (code **UB**...) - cylinder bores from 12 to 100
 - type "H" with sintered bronze rod guide (code **HB**...) - cylinder bores from 12 to 100
 - type "H" with linear ball bearings (code **HS**...) - cylinder bores from 12 to 100
- Tipo "U" con bronzine: movimentazione con carichi medi e basse velocità
Type "U" with sintered bronze rod guide: movements with medium loads and low speeds
- Tipo "H" con bronzine: movimentazione con carichi alti e basse velocità
Type "H" with sintered bronze rod guide: movements with heavy loads and low speeds
- Tipo "H" con cuscinetti a rotolamento: movimentazione con carichi medi e alte velocità
Type "H" with linear ball bearings: movements with medium loads and high speeds

Materiali

Corpo: alluminio anodizzato

Steli: C40 cromato

Materials

Body: aluminium (anodize treatment)

Rods: C40 (chromium plated)

chiave di codifica

key to codes

H B 0 8 0 C 1 5 0

tipo
type

guida stelo
rod guide

corsa
stroke

alesaggio cilindro
cylinder bore

Tipo [type]

H tipo "H" [type "H"]

U tipo "U" [type "U"]

Guida stelo [rod guide]

B bronzine [sintered bronze]

S cuscinetti a rotolamento [linear ball bearings]

alesaggi e corse disponibili

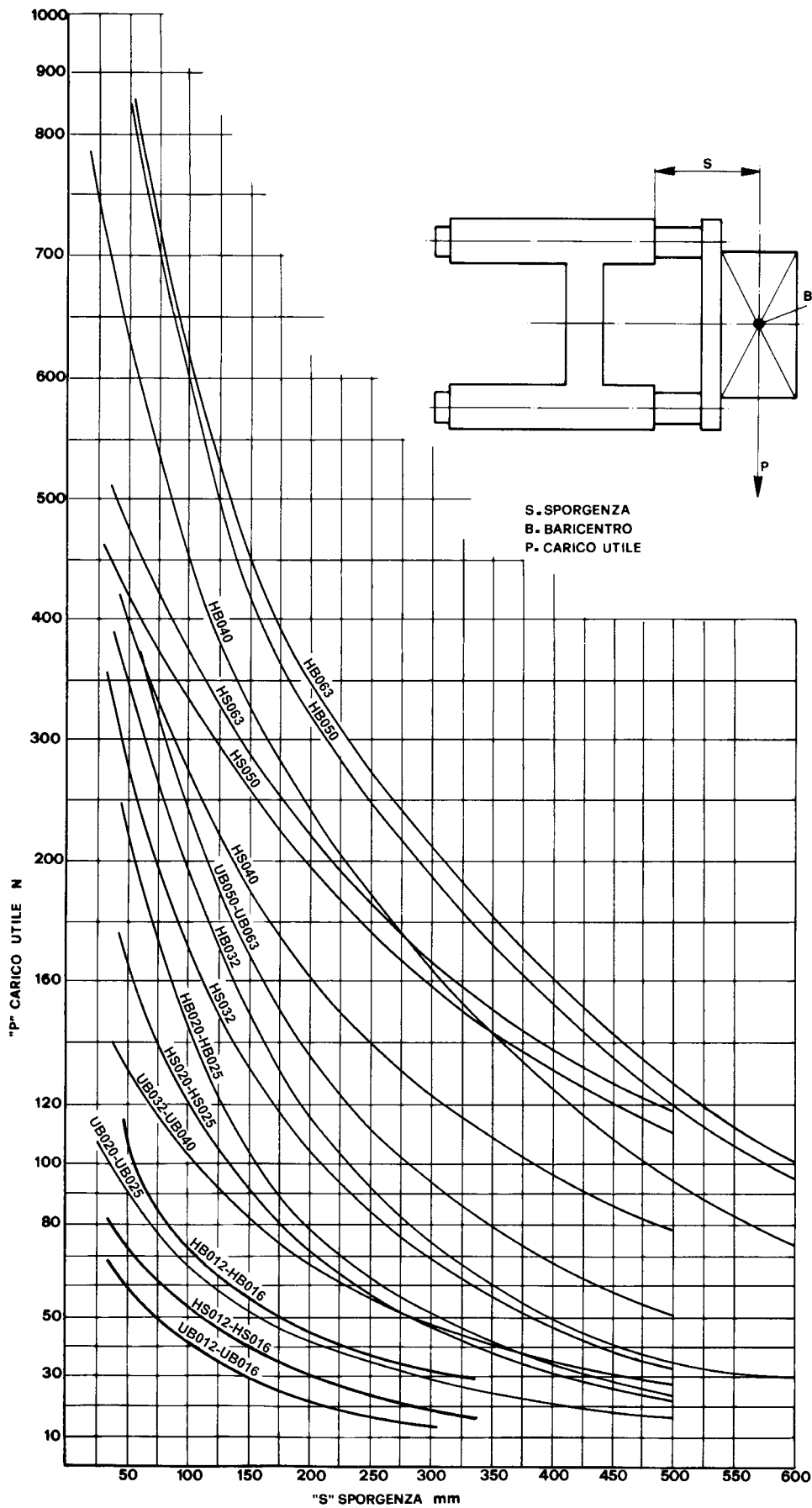
available bores and strokes

alesaggio corsa bore stroke	12* 16	20	25	32	40	50	63	80	100
50	X	X	X	X	X	X	X	X	X
100	X	X	X	X	X	X	X	X	X
150				X	X	X	X	X	X
160	X	X	X						
200	X	X	X	X	X	X	X	X	X
250	X	X	X	X	X	X	X	X	X
300				X	X	X	X	X	X
400				X	X	X	X	X	X
500				X	X	X	X	X	X

* L'unità di guida per l'alesaggio 12 si utilizza anche per l'alesaggio 16. Il codice rimane quello dell'alesaggio 12.

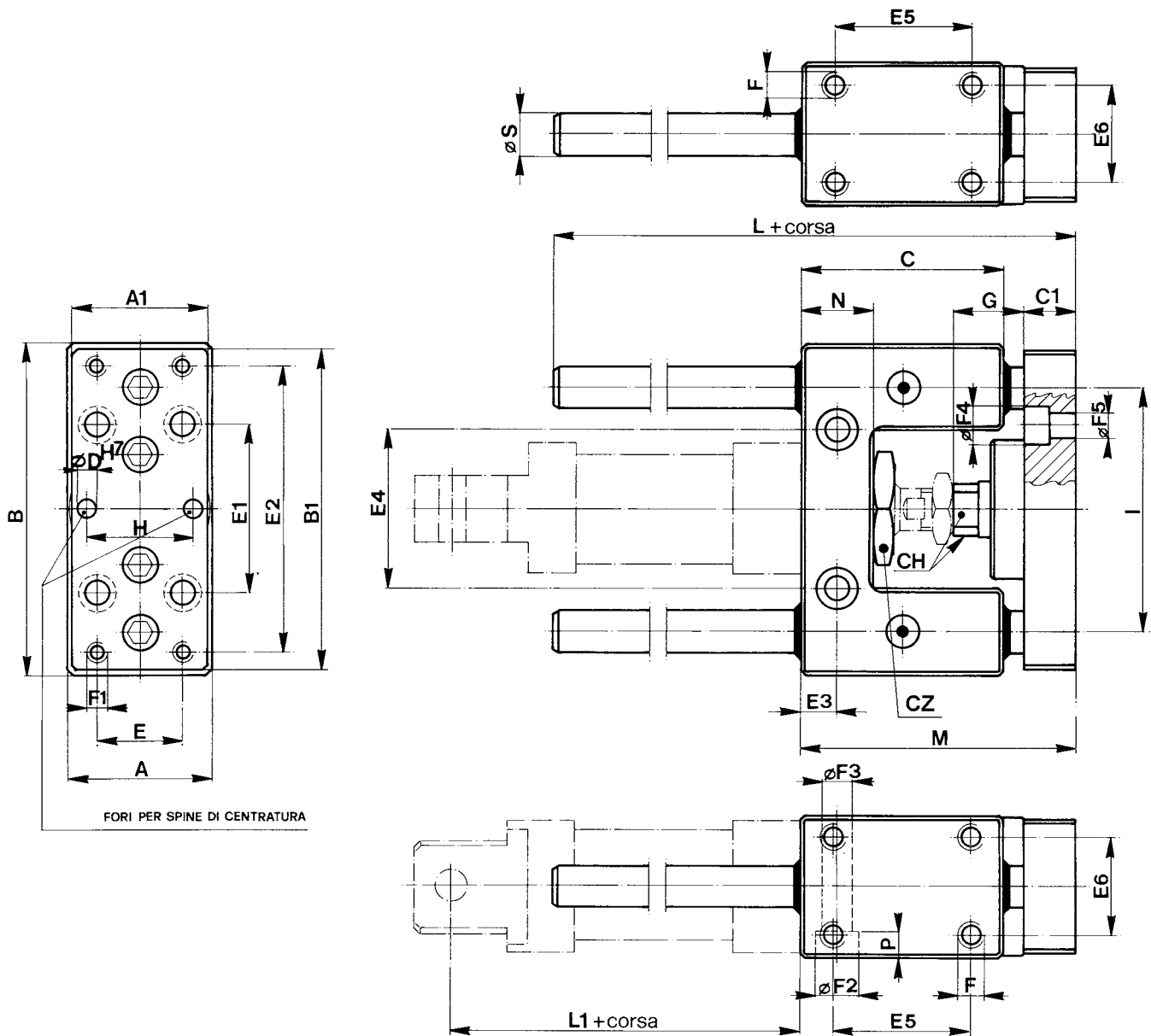
* The guiding unit for bore 12 is used also for bore 16, with the same code.

Carico ammissibile / Permissible loads



tipo "U" per microcilindri ISO 6432

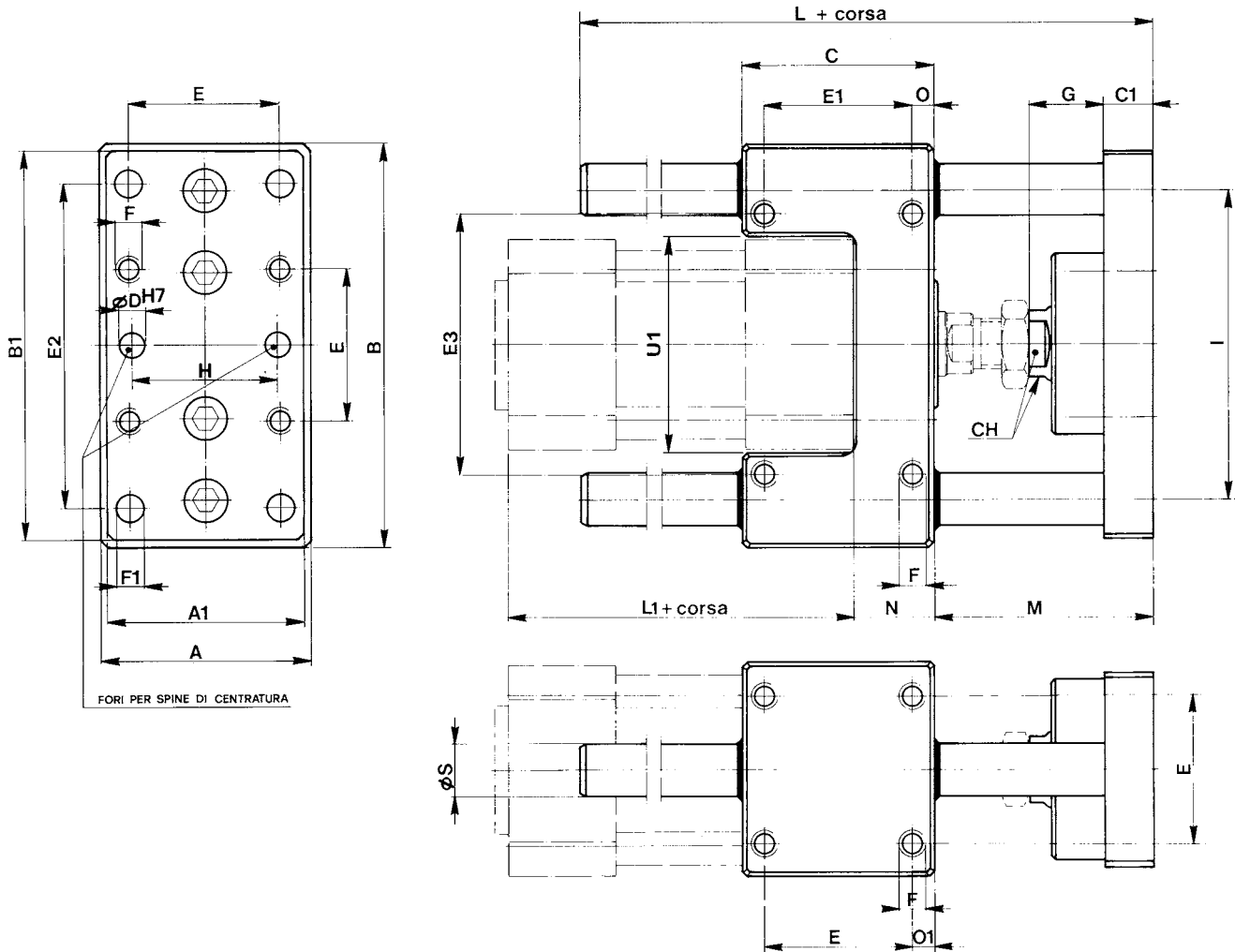
type "U" for minicylinders ISO 6432



ø CIL	A	A1	B	B1	C	C1	CH	CZ	D	E	E1	E2	E3	E4	E5	E6	F	F1	F2	F3	F4	F5	G	H	I	L	L1	M	N	P	S
12 16	30	27	65	63	38	10	8	19	4	15	32	54	6.5	24	25	22	M4	M4	8.5	5.1	7.5	4.5	12	15	46	70	53	51	13	5.5	8
																											60				
20	34	32	79	76	48	12	12	27	6	20	40	68	8.5	38	32.5	23	M6	M5	10.5	6.5	9	5.5	22	20	58	70	71	65	17	6.5	10
25	34	32	79	76	48	12	12	27	6	20	40	68	8.5	38	32.5	23	M6	M5	10.5	6.5	9	5.5	17	20	58	70	76	65	17	6.5	10

tipo "U" per cilindri ISO 6431

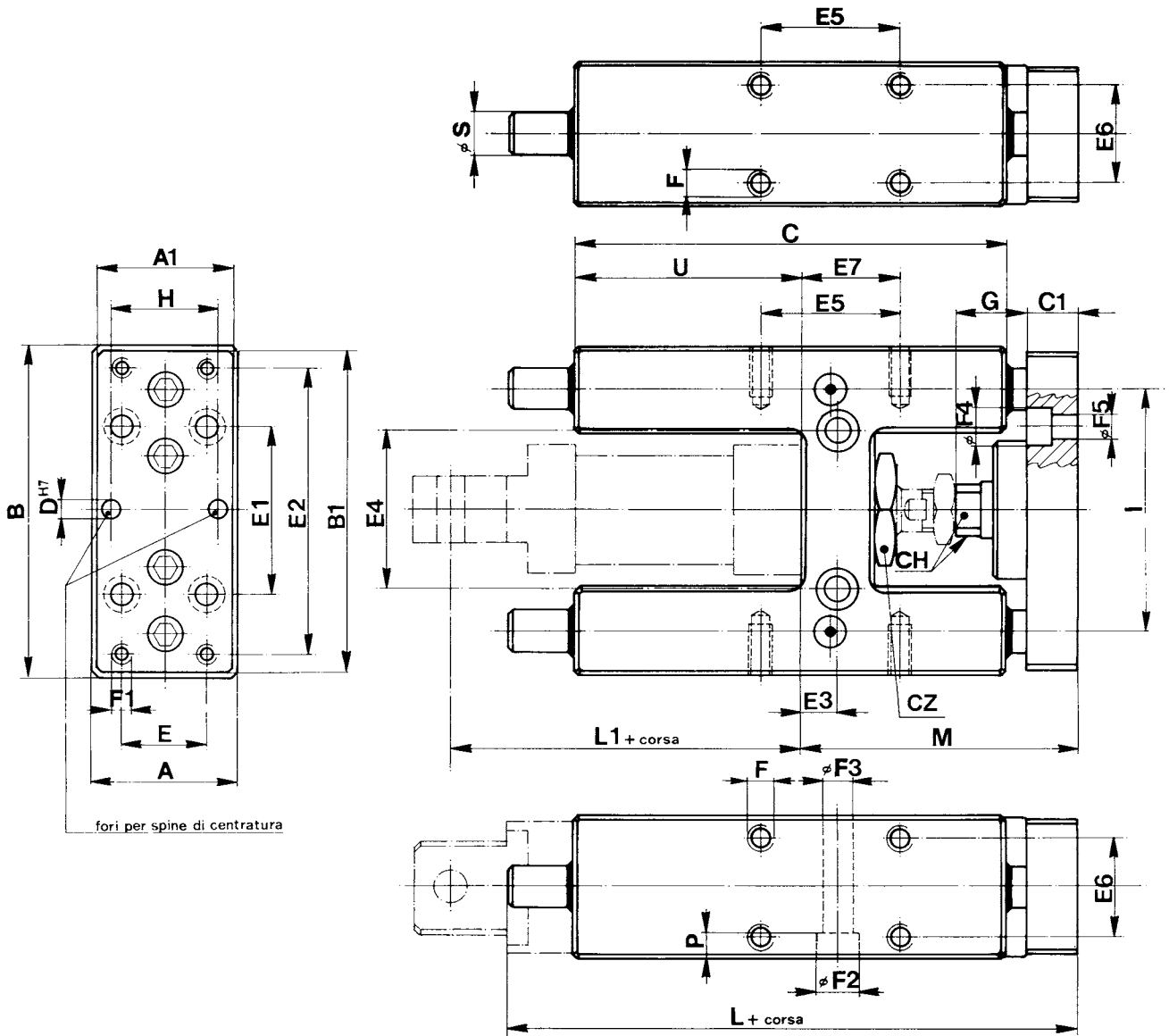
type "U" for cylinders ISO 6431



\varnothing CIL	A	A1	B	B1	C	C1	D	E	E1	E2	E3	F	F1	G	H	I	L	L1	M	N	O	O1	S	CH	U1
32	48	45	100	90	48	12	6	32.5	32.5	78	58	M6	6.5	20	31	74	106	94	54	17	7.8	7.8	12	13	48
40	56	50	106	105	58	12	6	38	38	84	64	M6	6.5	22	36	80	117	105	55	21	10	10	12	15	54
50	66	60	125	124	59	15	6	46.5	46.5	100	80	M8	9	23	45	96	129	106	68	25	6.3	6.3	16	21	67
63	76	70	132	125	76	15	6	56.5	56.5	105	95	M8	9	23	45	104	146	121	68	25	9.8	9.8	16	21	76
80	98	90	165	155	90	18	6	72	50	130	130	M10	11	30	56	130	170	128	78	34	20	9	20	27	97
100	118	110	185	175	110	18	6	89	70	150	150	M10	11	30	56	150	190	138	78	39	20	10.5	20	27	117

tipo "H" per microcilindri ISO 6432

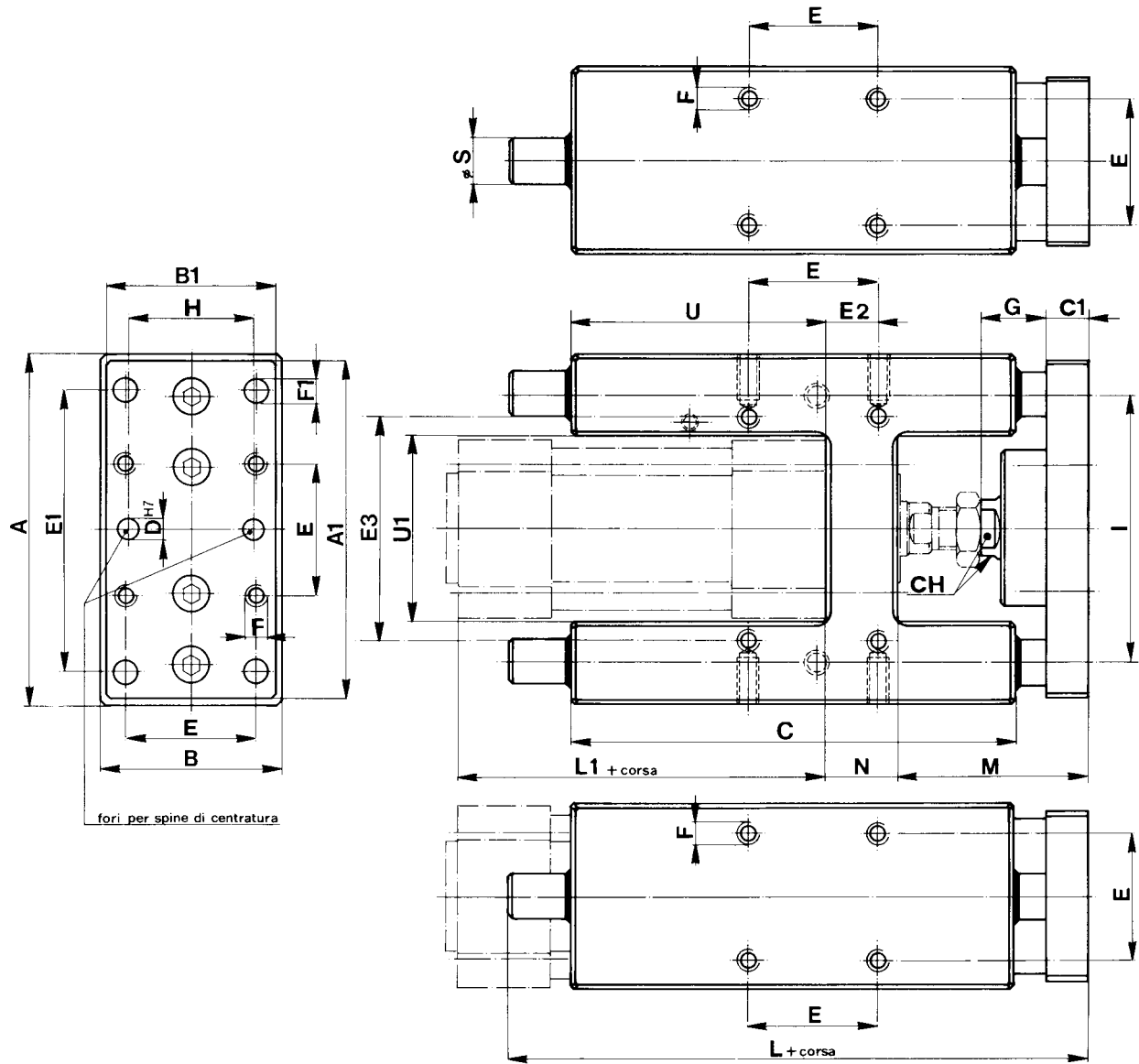
type "H" for minicylinders ISO 6432



∅ CIL	A	A1	B	B1	C	C1	CH	CZ	D	E	E1	E2	E3	E4	E5	E6	E7	F	F1	F2	F3	F4	F5	G	H	I	L	L1	M	P	S	U
12 16	30	27	65	63	75	10	8	19	4	15	32	54	6.5	24	32.5	22	11	M4	M4	8.5	5.1	7.5	4.5	12	15	46	130	53	51	5.5	8	37
																												60				
20	34	32	79	76	108	12	12	27	6	20	40	68	8.5	38	32.5	23	15	M6	M5	10.5	6.5	9	5.5	22	20	58	159	71	65	6.5	10	58
25	34	32	79	76	108	12	12	27	6	20	40	68	8.5	38	32.5	23	15	M6	M5	10.5	6.5	9	5.5	17	20	58	159	76	65	6.5	10	58

tipo "H" per cilindri ISO 6431

type "H" for cylinders ISO 6431



∅ CIL	A	A1	B	B1	C	C1	CH	D	E	E1	E2	E3	F	F1	G	H	I	L	L1	M	N	S	U	U1
32	97	90	50	45	125	12	13	6	32.5	78	4.3	61	M6	6.5	20	31	74	177	94	54	17	12	76	50.5
40	115	105	58	50	136	12	15	6	38	84	11	69	M6	6.5	22	36	87	192	105	55	21	16	81	58.5
50	137	124	70	60	144	15	21	6	46.5	100	18.5	85	M8	9	23	45	104	237	106	68	26	20	79	70.5
63	152	145	85	70	176	15	21	6	56.5	105	15.3	100	M8	9	23	45	119	237	121	68	26	20	111	85.5
80	189	180	105	100	215	20	27	6	72	130	21	130	M10	11	30	56	148	280	128	78	34	25	128	106
100	213	200	130	120	220	20	27	6	89	150	24.5	150	M10	11	30	56	173	280	138	78	39	25	128	131